

Industry-Powered Home Search

only available through your real estate professional



Inbox (14)

Hi Bart,

Here are some new listings for you. Rhode Island St has a pool, a large backyard and it's only 6 minutes from your work. Beale St has a lot of natural light, is near downtown and is on a corner lot. Please let me know what you think.



\$1,040,000 2 Days on Market

[9 East College St., Palo Alto, 94306](#)

4 Bd | 2 Ba | 3,266 sqft | 5,266 lot

Perfectly located on a flat block between Duboce Street and Alamo Square, this beautifully remodeled condo is a full floor...

Compare with 2 Other Matches



Amy Agent
(123) 123-1234

CENTURY 21
Judge Fite Company

Photo-Centric

Visual information front and center for better and quicker decisions.

Completely Personalized

Customized email property alerts that cater to your wants and needs

Accurate Data from the MLS

Listings sourced directly from the MLS. Accurate and *fast!*

Room-by-Room Comparisons

Compare properties side-by-side and focus on the details you care about

Always with Your Agent

No ads, no distractions. Just you and your agent - always in sync

Ask Your Real Estate Professional to Receive Exclusive Access

Powerful Property Comparison

only available through your real estate professional

Easy, No-Hassle Comparisons

Pick any property on the market and automatically compare with a few clicks.

Compare Rooms

See rooms side-by-side. No need to flip through 15 pictures to find the kitchen!

\$2,988,000

\$640 per sqft



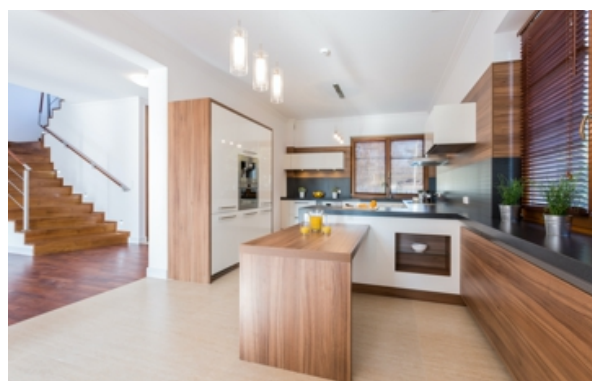
9 East College St.

Palo Alto | 94306

Beds: 4 | Baths 2 | Sqft: 3,266

Elegant living in an excellent location. Effectively rebuilt in 1995, the 1st floor is completely remodeled and second floor...

Kitchen



Living Room



Bathroom



Bedroom



\$950,000

\$480 per sqft



387 Cemetery Rd.

Palo Alto | 94306

Beds: 2.5 | Baths 2.5 | Sqft: 1,350

Perfectly located on a flat block between Duboce Street and Alamo Square, this beautifully remodeled condo is a full floor...

Kitchen



Living Room



Bathroom



Bedroom



\$1,033,000

\$560 per sqft



255 West Mechanic Drive

Palo Alto | 94306

Beds: 2.5 | Baths 2.5 | Sqft: 1,350

On a quiet, tree-lined street, half a block from Bernal's Village, this 3-level home is the one you've been waiting for.

Kitchen



Living Room



Bathroom



Bedroom



Accurate Data from the MLS

We source listings direct from the MLS, so you get accurate data, fast

Ask Your Real Estate Professional to Receive Exclusive Access